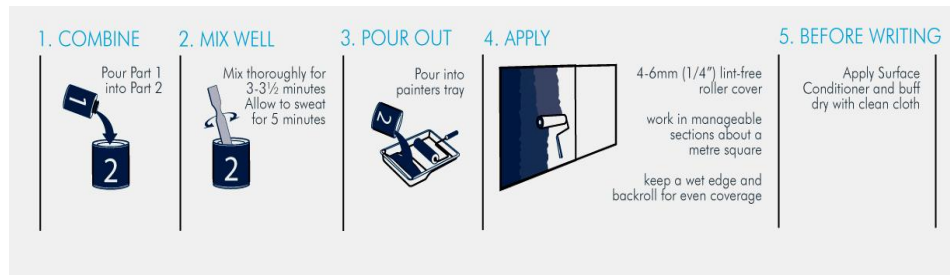


TECHNICAL SPECIFICATION

CLEAR ERASE

Product	Clear Erase
Description	Low VOC, low odour, high sheen transparent liquid coating, for application to smooth, low porosity surfaces. Creates dry erase surface once cured.
Kit size	Kit 40 : maximum coverage 3.6 sq m Kit 90 : maximum coverage 8.37 sq m Kits comprise of : Part 1 Polymer Hardener, Part 2 Acrylic Coating, Surface Conditioner
Application	Please refer to full Application Instructions (link to pdf), Video showing Application instructions (link to video), and MSDS (link to pdf)



Use	Before writing/drawing on for the first time, apply Surface Conditioner for optimum results. Clear Erase is designed for use with Dry Erase marker pens, or Chalkboard marker pens. Do not use any sharp writing instrument, ballpoint pens or permanent markers
Maintenance	<p>Dry Erase marker pens : Use Microfibre towel, Bristle Eraser and Dry Erase Spray cleaner for daily use. When Dry Erase Spray cleaner used, rinse with clean water afterwards.</p> <p>Chalkboard marker pens : Once ink is dry, wipe clean with damp Microfibre towel or Bristle Eraser.</p> <p>General : Dry Erase Spray cleaner will remove any ink dust build up. Rinse surface clean afterwards.</p>
Health & Safety	Please refer to MSDS (link to pdf)

TEKTURA
WALLCOVERINGS

TEKTURA PLC, Suite 1.03 Harbour Island, 34 Harbour Exchange Square, London E14 9GE
Tel 020 7536 3300 Fax 020 7536 3322