

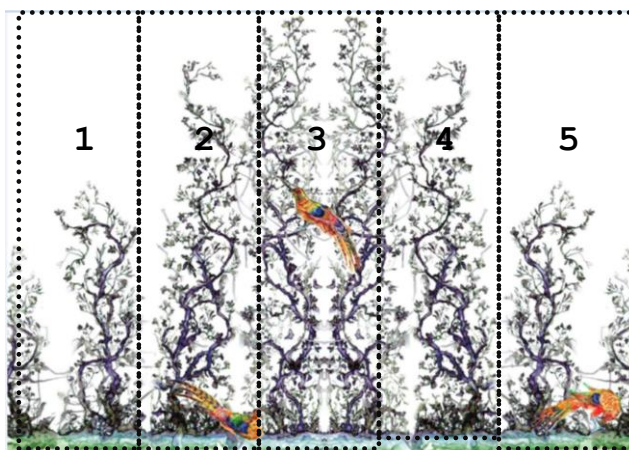
TECHNICAL SPECIFICATION

TIMOROUS BEASTIES wallcoverings / window graphics / acrylic

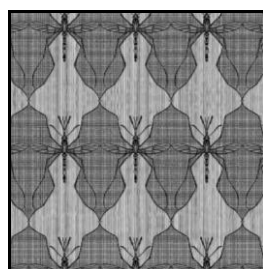
DIGITALLY PRINTED wallcoverings

Product	TIMOROUS BEASTIES: digitally printed wallcovering, window film and acrylic
Description	Digifort commercial quality vinyl wallcovering laminated onto woven/non woven fabric backing. These designs can also be printed on other Tektura wallcoverings.
Weight	From 350 grammes per square metre.
Roll Size	TIMOROUS BEASTIES digitally printed wallcoverings and wall murals are made to order, to fit customer's own wall dimensions. Designs can be scaled up and down, stretched, cropped and repeated to suit. The wallcovering is supplied in pre-cut drops. The number, width and height of each drop are determined by the final wall dimensions. Drops are supplied with extra selvedge for overlapping and trimming.

Example. 'A Bird in the Bush' wall mural supplied in 5 drops



DOGTOOTH
Repeating pattern
Max repeat size
250mm wide x 200mm high
Can be custom coloured



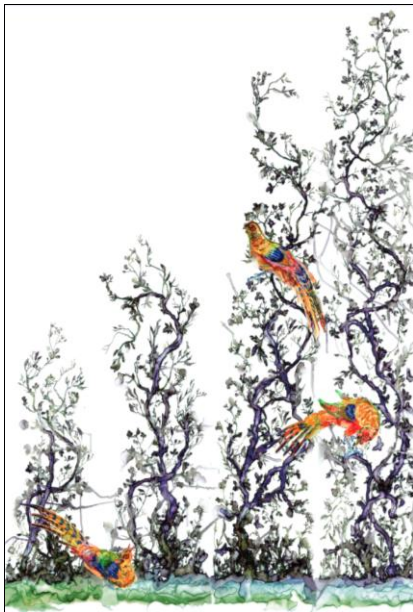
MOSQUITO
Repeating pattern
Max repeat size
250mm wide x 430mm high
Can be custom coloured



LITTLE BLOTCH
Repeating pattern
Max repeat size
1100mm wide x 800mm high
Can be custom coloured



NYLONED TOILE
Repeating pattern
Max repeat size
1100mm wide x 710mm high
Can be custom coloured



Standard design

A BIRD IN THE BUSH

STANDARD DESIGN

Maximum recommended size :
2100mm wide x 2700mm high

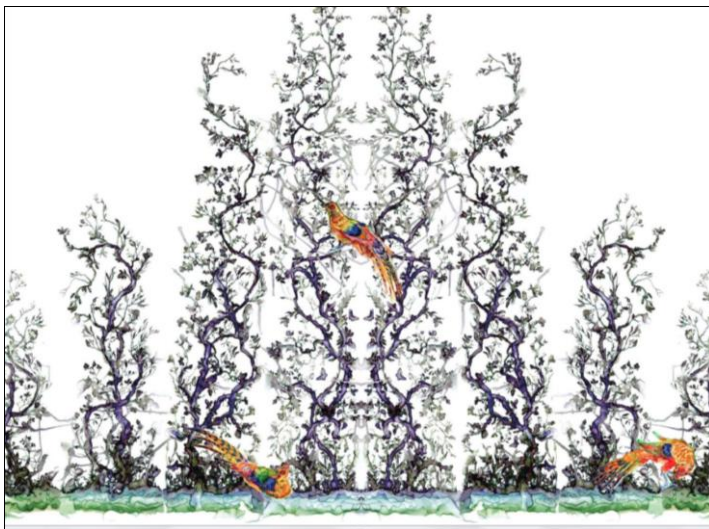
Size can be shrunk/enlarged or cropped to fit any space
- eg to 2 bushes width

CUSTOMISING YOUR DESIGN

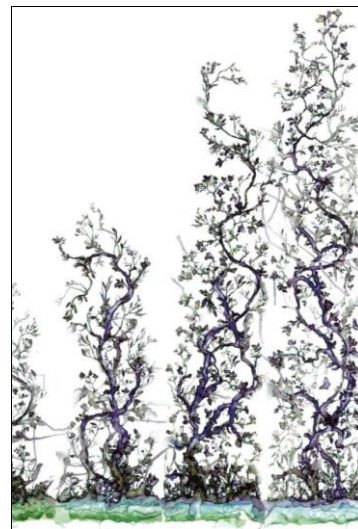
Bushes are designed to differ in size as shown, and can be repeated or mirrored to cover any length wall.

Birds are automatically included as shown, but can be removed if preferred. Birds can also be repositioned.

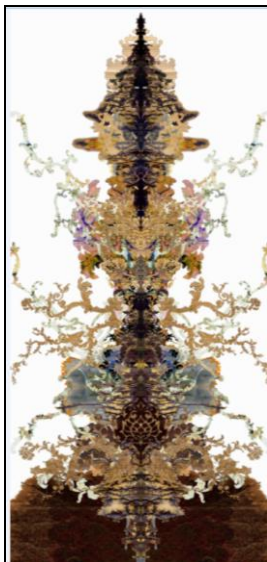
This design cannot be custom coloured, but instead of a white background, a coloured, textured and / or iridescent surface can be used to great effect.



Design mirrored , with birds repositioned



Design with birds removed



GRAND PAPER DAMASK

Maximum recommended size :
1130mm wide x 2700mm high

Printed as a single feature, or the design can be repeated along any length of wall.

Size can be reduced/enlarged, or cropped to fit any space.

This design itself cannot be custom coloured, but instead of a white background, a coloured, textured and / or iridescent surface can be used to great effect.



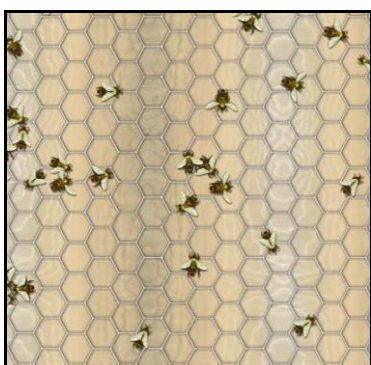
BUTTERFLY DAMASK

Maximum recommended size :
1130mm wide x 2700mm high

Printed as a single feature, or the design can be repeated along any length of wall.

Size can be reduced/enlarged, or cropped to fit any space.

This design is offered in 2 standard colours, and cannot be custom coloured. Instead of a white background, a coloured, textured and / or iridescent surface can be used to great effect.



BEES

Maximum recommended size :
1970mm wide x 2700mm high
Each honeycomb is approx 80mm diameter.

Printed as a single feature, or the design can be shrunk / cropped / repeated to fit any size space.

This design cannot be custom coloured.



TROPICAL ORCHID

A repeating design.
Maximum recommended repeat size :
860mm wide x 900mm high

Size can be reduced / enlarged, repeated, or cropped to fit any space.

This design cannot be custom coloured. Instead of a white background, a coloured, textured and / or iridescent surface can be used to great effect.



DAMSEL DAMASK

Maximum recommended repeat size :
1800mm wide x 2700mm high
The image shown shows a single repeat.

Can be repeated, cropped, resized to fit any space

This design CAN be custom coloured. It is recommended that trial samples are printed for colour approval.

The background can be left white, coloured or left blank, allowing a textured and/or iridescent surface to remain visible to great effect.

Maximum Recommended print size	All these designs can be cropped, repeated, enlarged or scaled down to suit. They can also be repeated. Each design has been tested to enlarged to 2.7m height without any loss of quality. Please check individual designs for suggested maximum sizes and repeats.
Colour	<p>DAMSEL DAMASK, DOGTOOTH, MOSQUITO, NYLONED TOILE and LITTLE BLOTCH digitally printed wallcoverings and wall murals are available in standard colours as shown, but can easily be customised if required.</p> <p>All other TIMOROUS BEASTIES designs are available in standard colours.</p> <p>We print onto our wallcoverings - which vary from smooth and rough textures, in white or coloured, through to iridescent surfaces.</p> <p>The white background in these designs denotes the area of wallcovering that is not printed. So the underlying wallcovering becomes an integral part of the design - not only in colour, but also texture and surface sheen.</p>
Fire Rating	<p>Euroclass B / (UK) Class 0 and 1 to BS476 part 6 and 7 when adhered to a suitable substrate / Marine.</p> <p>Euro classification B when adhered to suitable substrate.</p> <p>Marine fire rated</p>
Adhesive	Generally Tekfix Plus, though depends on substrate.
Hanging	<p>Digital wallcovering is printed to order, and each order is unique. The pattern match points, selvedge allowance and sequence in which drops should be installed are given in hanging instructions supplied with order. Exact pattern matching is vital. The product should not be reverse hung.</p> <p>Apply adhesive to wall surface. Carefully smooth wallcovering onto wall surface using a felt roller or felt-covered spatula. Note that allowance will have been made for trimming top and bottom to compensate for uneven walls. Overlap lengths and visually match image. (In many cases crop marks are also included at the top/bottom of each drop as an additional guide to pattern matching). Adjust position if necessary to achieve optimum pattern match. Double cut through using a sharp blade, cutting perpendicular to wall surface to ensure a clean join. Use a seam roller to ensure product is well bonded at the join. Remove any adhesive seepage immediately with warm water.</p>
Maintenance	<p>Digital vinyls with fabric backing are wipeable and washable, and offer some resistance to knocks. With regular cleaning they will retain their original appearance for many years depending on area of use.</p> <p>Always carry out a trial in an inconspicuous area first, to ensure cleaning agent suitable. Avoid polishes, abrasive cleaners, solvent or bleach-based cleaners as these will damage the print and vinyl. Slight or moderate soiling can be removed using a combination of mild non-soapy detergent and a soft damp cloth/sponge. Dabbing – certainly not rubbing – is recommended to lift the soil.</p> <p>It is important to rinse off with clean water and (absorbent) cloth, always cleaning from the skirting level upwards. Individual stains should be removed as quickly as possible. This wallcovering contains antimicrobials which guard against mildew and bacterial growth</p>
Health & Safety	This product is classified as non-hazardous and therefore does not require any special handling. This product does not require special labelling.
Handling/Storage	Store at ambient temperatures away from heat source. Suitable lifting equipment may be required.
Fire Fighting	Any extinguishing media are suitable. Wear self contained breathing apparatus, protective clothing and full face mask. Fumes should be ventilated immediately due to possible liberation of noxious gases.
Ecological	This product is not bio-degradable. Dispose of in accordance with Local Authority regulations or via an authorised contractor.

DIGITALLY PRINTED window film

Description	70 micron polymeric film, frosted or clear.
Weight	22 grammes per square metre
Size	Varies, depending on project
Fire Rating	Euroclass B
Adhesive	Product is self adhesive - permanent pressure sensitive acrylic with Kraft release liner
Installation	Apply the film using a wet application method to saturate the glass, using either proprietary application fluid or a solution of water with a drop of washing up liquid added. Align the film at the top edge using the 'hinge' method. Squeegee the film by applying overlapping strokes from the top centre outwards in each direction and then repeat down the film. A felt squeegee is recommended to avoid scratching. Avoid creasing the film. Once applied the film can be trimmed with a sharp blade. Be aware that water around the edge of the panel will cause dirt ingress, so avoid excess fluid towards the edges of the film.
Maintenance	The film is wipeable and washable. With occasional cleaning it will retain its original appearance for many years depending on area of use. Always carry out a trial in an inconspicuous area first, to ensure cleaning agent suitable. Clean with a mild non-soapy detergent with a soft cloth or sponge. Excess water can be carefully removed with a soft rubber squeegee. Be aware that any grit or rough edges on the squeegee may cause scratching.
Health & Safety	This product is classified as non-hazardous and therefore does not require any special handling. This product does not require special labelling.
Handling/Storage	Store at ambient temperatures away from heat source. Suitable lifting equipment may be required.
Fire Fighting	Any extinguishing media are suitable. Wear self contained breathing apparatus, protective clothing and full face mask. Fumes should be ventilated immediately due to possible liberation of noxious gases.
Ecological	This product is not bio-degradable. Dispose of in accordance with Local Authority regulations or via an authorised contractor.

DIGITALLY PRINTED Acrylic

Description	5mm thick cast acrylic, backprinted. The acrylic is clear, with a glossy or antiglare(matt) surface. Supplied with flame-polished edges.
Weight	595 grammes per square metre, based on 5mm thick acrylic.
Panel size	Varies, depending on project. Max recommended size 2400mm x 1200mm

Fire Rating	Class 3 to BS476 part 7
Installation	Panels are supplied ready-drilled, with satin silver mount fixings. Used in conjunction with fittings supplied, the panels are designed to sit 18mm proud of the wall surface.
Maintenance	<p>Acrylic panels can be cleaned by washing with a solution of lukewarm water with a drop of washing up liquid, using a soft cloth / chamois leather to loosen any dirt and grime. Then, rinse with cold water and dry with a very soft cloth / chamois leather to prevent water spotting, and help prevent static.</p> <p>Do not use chemicals, glass spray, or other abrasive cleaning materials. Do not use any form of scraper or squeegee or other sharp instruments.</p>
Health & Safety	No classifiable hazardous ingredients.
Handling/Storage	<p>Large panels can be heavy and unwieldy. Handle with care. If broken or chipped, the resultant edges can be sharp and cause cuts to skin and eyes. Wear suitable gloves. Take precautionary measures against static discharges.</p> <p>Store below 40°C and away from heat source. Store vertically on A frames (larger panels). Suitable lifting equipment may be required</p>
Fire Fighting	Water spray, foam, dry powder or CO2. Wear self contained breathing apparatus, protective clothing and full face mask. Fumes should be ventilated immediately due to possible liberation of toxic, irritant and flammable vapours.
Ecological	This product is not bio-degradable. Dispose of in accordance with Local Authority regulations or via an authorised contractor.

TEKTURA
WALLCOVERINGS

TEKTURA PLC, Suite 1.03 Harbour Island, 34 Harbour Exchange Square, London E14 9GE
Tel 020 7536 3300 Fax 020 7536 3322