

TECHNICAL SPECIFICATION

53CM WIDE VINYL WALLCOVERING

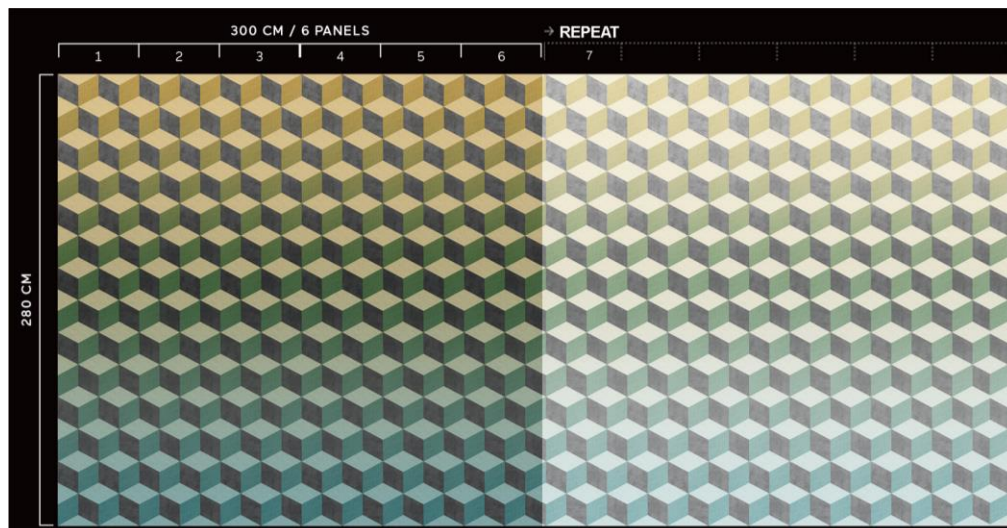
Product	Cubiq Collection
Description	Rolls : Narrow light weight vinyl wallcovering with a non woven backing. Murals : digitally printed on non-woven fibre. DX refs : printed on medium weight vinyl with non woven backing. (Other textures for murals available on request)
Weight	Rolls : 280 grammes per square metre Murals : 150 grammes per square metre / DX refs 350 grammes per sq m.
Roll Size	53cm x 10m
Mural size	280cm high x 300cm. Some designs repeat widthways - see below for info.
Fire Rating	Euroclass B when adhered to suitable substrate.
Adhesive	Rolls / murals on non-woven fibre : Tekfix 65 / DX Murals on vinyl : Tekfix Plus
Hanging	Apply adhesive to wall surface. Butt join. Please see below for specific hanging guide per design.

STANDARD WALLCOVERING ROLLS 10m x 53cm			
200350-200354	220360 - 220368 220370 - 220373	219211- 219226 220381 -220.92	17319 -17326
Do not reverse / Straight hang / 12.8cm V repeat	Do not reverse / Straight hang / 16cm V repeat	Reverse hang / Random match	Do not reverse / Straight hang / 3cm V repeat

MURALS

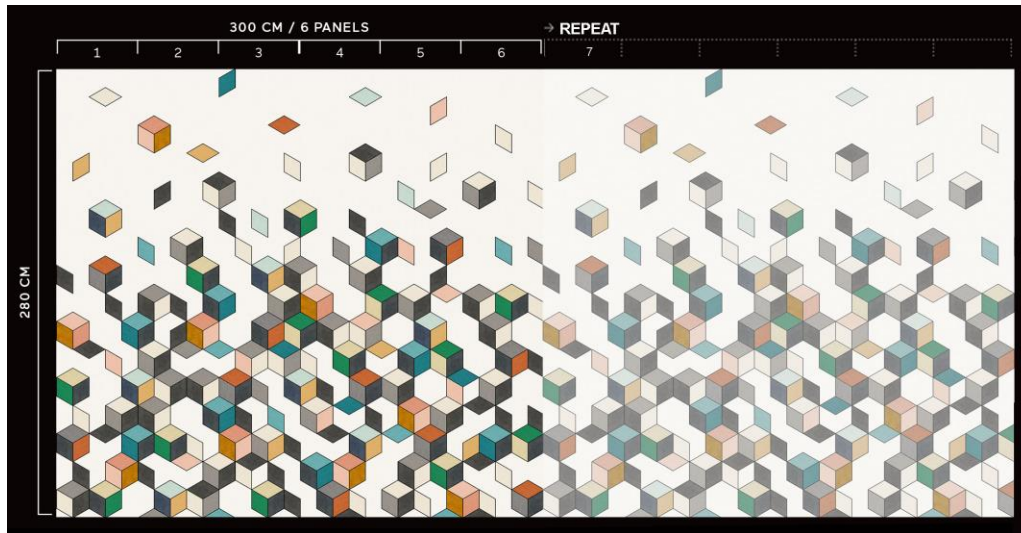
FADING CUBE : 280cm high x 300cm wide : 200415, 200417, 200418, 200420 / DX suffix = printed on vinyl

Supplied in 6 drops. Each drop 280cm x 50cm / Match up pattern. Straight hang.
Design can be repeated along any length wall.



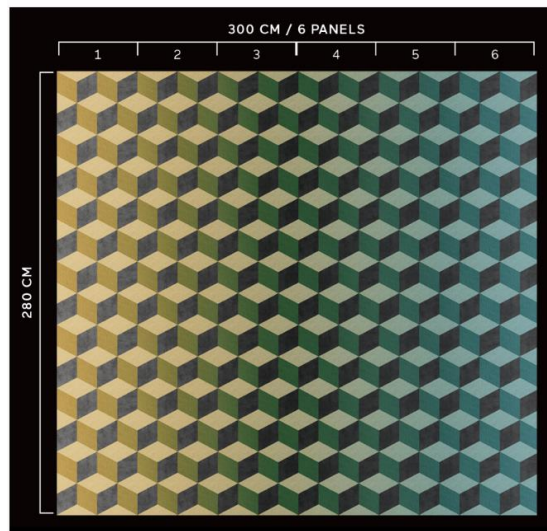
FALLING CUBE : 280cm high x 300cm wide: 200450, 200451, 200452 / DX suffix = printed on vinyl

Supplied in 6 drops. Each drop 280cm x 50cm / Match up pattern. Straight hang.
Design can be repeated along any length wall.



FADING CUBE : 280cm high x 250cm wide : 200416, 200419 / DX suffix = printed on vinyl

Supplied in 6 drops. Each drop 280cm x 50cm / Match up pattern. Straight hang. This does NOT repeat.



Maintenance

Light/medium weight vinyls with a non woven backing offer an easy-clean finish and some resistance to knocks and scrapes. They are best used in 'low-traffic' areas and will retain their original appearance for 3 - 5 years, depending on area of use.

Always carry out a trial in an inconspicuous area first, to ensure cleaning agent is suitable. Clean with a mild non-soapy detergent with soft cloth or sponge. Do not use polishes, abrasive cleaning agents or strong cleaners as they will damage the surface. Always clean from skirting level upwards. Rinse thoroughly with clean water (avoid over wetting). Individual stains should be removed as quickly as possible. **Murals are wipeable.**

Health & Safety

This product is classified as non-hazardous and therefore does not require any special handling. This product does not require special labelling.

Handling Storage	Store at ambient temperature away from heat source. Suitable lifting equipment may be required.
Fire Fighting	Any extinguishing media are suitable. Wear self contained breathing apparatus, protective clothing and full face mask. Fumes should be ventilated immediately due to possible liberation of noxious gases.
Ecological	This product is not bio-degradable. Dispose of in accordance with Local Authority Regulations or via an authorised contractor.

TEKTURA
WALLCOVERINGS

TEKTURA PLC, Suite 1.03 Harbour Island, 34 Harbour Exchange Square, London E14 9GE
Tel 020 7536 3300 Fax 020 7536 3322