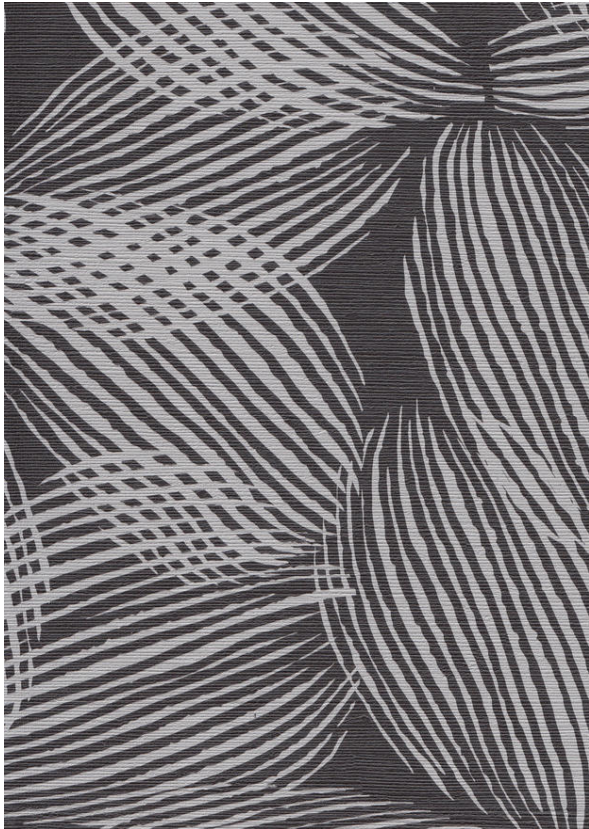


Esplanade

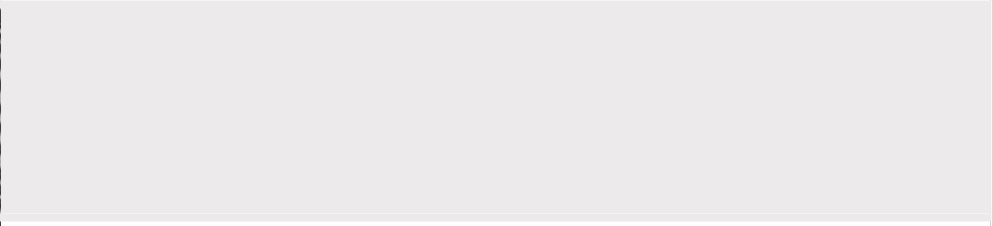
ESP SG0112

Designed by Stacy Garcia. Mid-century modern botanical print



All colours in Esplanade (15)







About Esplanade

STACY GARCIA
NEW YORK



Stacy Garcia is an internationally renowned interior product designer, having initially studied and designed textiles in the UK, Europe and the USA.

Esplanade is just one design from the Stacy Garcia®/New York portfolio and is inspired by the botanical gardens of the Bronx and Manhattan's Central Park.

Each design tells a story influenced by the artisans, architecture, sights and sounds of her home town New York. Do have a look at other designs in this New York-inspired series: ***Cityscape, Market Street, Brushwick, Minetta*** and ***Highrise***.

To learn more about Stacy Garcia - ***please click here***.

Esplanade is in our **White** binder



✉ My library needs updating. Please contact me

Specification

[Fabric backed vinyl wallcovering ▶](#)

137cm wide

Sold by the Linear metre

[Euroclass B ▶](#)

Light reflectance (LRV) 18

📄 Technical data downloads

[esplanadetechnical-data.pdf 📄](#)

If you like **Esplanade**, you might like...



Paradox



Minetta

