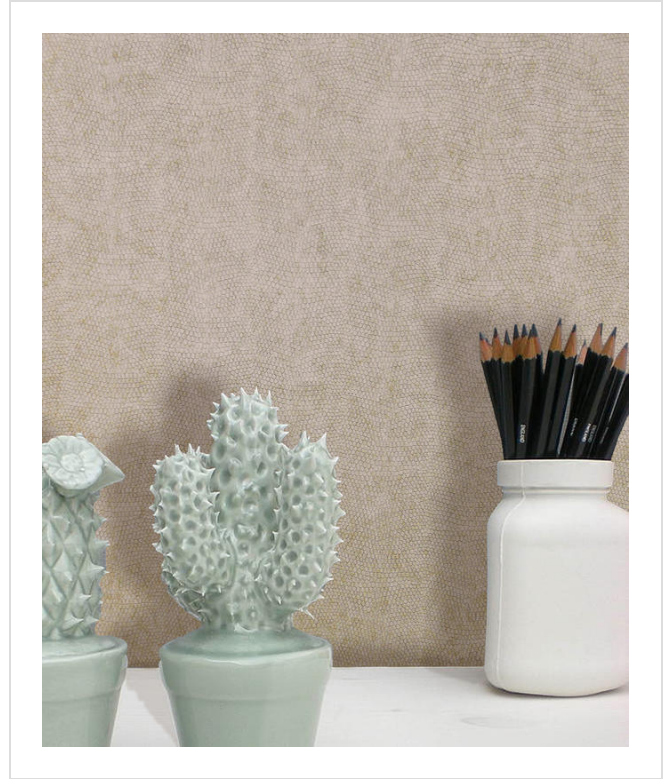
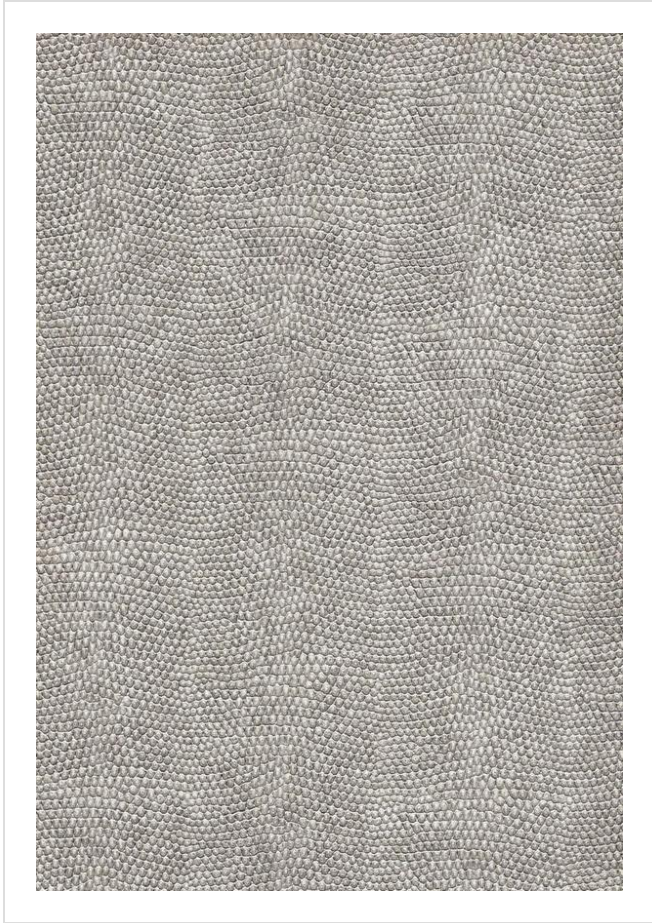


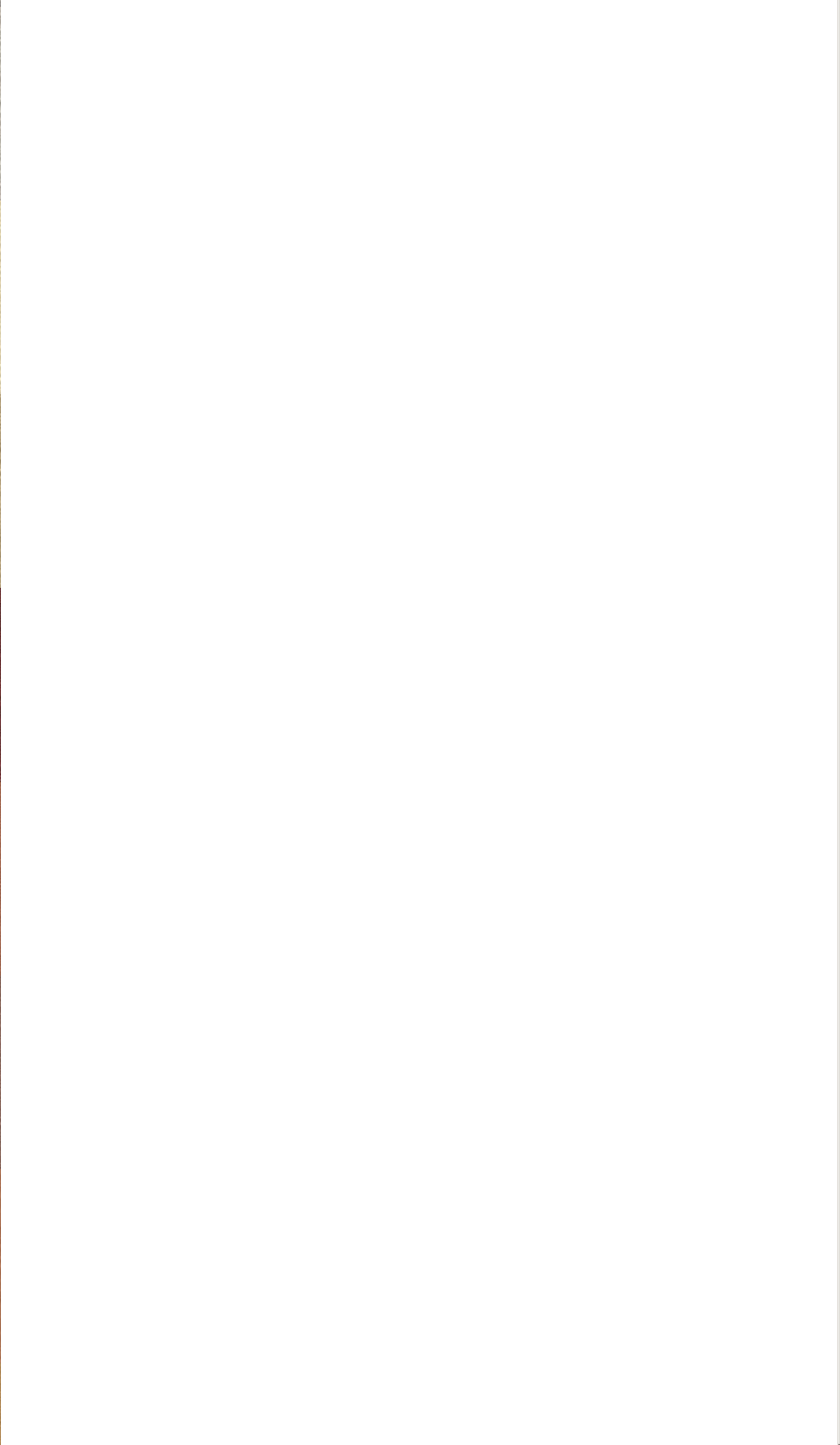
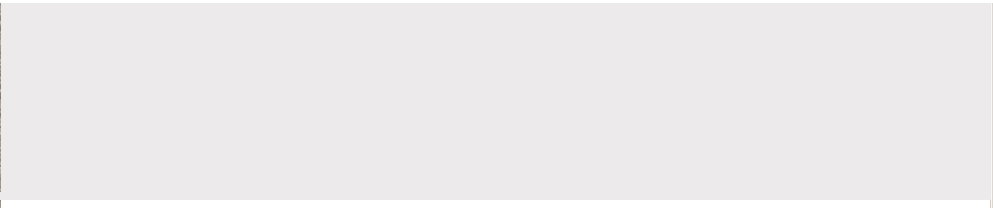
# Intrigue

INT97



More colours in Intrigue (12)



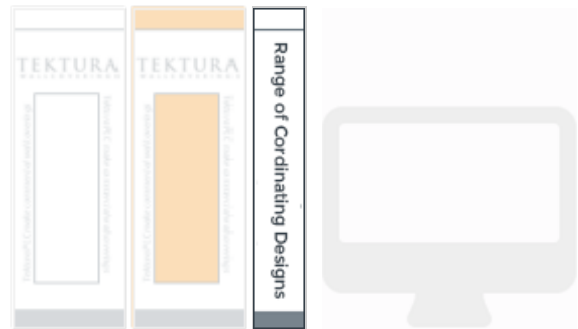


## About Intrigue

Intrigue is designed by Sondra Alexander. Best known for her leather and skin effects, Sondra adds extra detail with stitching, burnishing and weaving. We're delighted to feature Sondra's best selling designs in our range.



**Intrigue** is in our Internet Exclusive binder



✉ My library needs updating. Please contact me

## Specification

[Fabric backed vinyl wallcovering ▶](#)

137cm wide

Sold by the Linear metre

[Euroclass B ▶ Class 0 and 1 ▶](#)

Light reflectance (LRV) 56

📄 Technical data downloads

[intrigue-technical.pdf](#) 📄

If you like **Intrigue**, you might like...



Bead