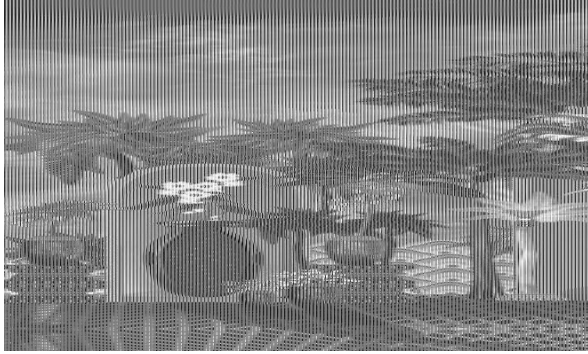


Modern Love

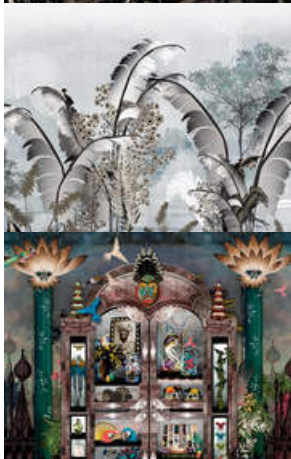
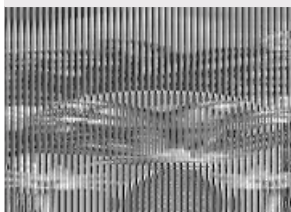
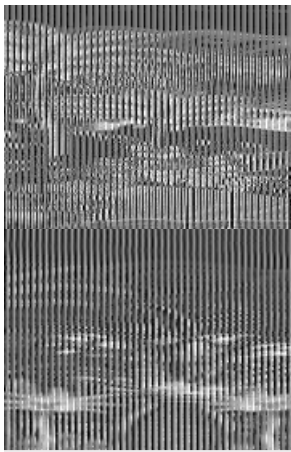
Secret Garden

Pure escapism! Exotic landscapes and magical murals designed by Modern Love



All designs by Modern Love (10)





About Modern Love

Sarah Arnett and Kim Hunt are **Modern Love**. Based in Brighton, they hail from the world of high end fashion having designed collections for Liberty, as well as collaborations with Christian Dior and Escada. Now they're moving into interiors and have created these stunning murals exclusively for Tektura.

Modern Love is an internet exclusive.





Mystical landscapes are saturated with colour and a thousand tiny details. Influenced by ancient art, oriental pattern, African vibes and Asian artefacts, Sarah and Kim are modern day storytellers. All designs are available as wallcovering, window film, acrylic artwork and can be printed onto our Zintra acoustic panels. Sarah and Kim will also undertake commissions to create a totally unique made-to-measure design for clients, as well as fabrics and upholstery - ***find out more here***

We can resize and print Modern Love murals to fit your space. Turn round is fast and there's no minimum order.

See our data download below for further information.
Watch our video to see how our digital wallcovering is made and installed.



✉ My library needs updating. Please contact me

Specification

[Fabric backed vinyl wallcovering ▶](#)

[Digitally printed / made to measure ▶](#)

[Available as wallcovering and window graphics ▶](#)

Sold by the Made to Measure

[Euroclass B ▶ Marine \(please enquire\) ▶](#)

📄 Technical data downloads

[modern-love-technical-data.pdf 📄](#)

[artwork-guide.pdf 📄](#)

[how-to-install-digitally-printed-wallcoverings.pdf 📄](#)

If you like **Modern Love**, you might like...

